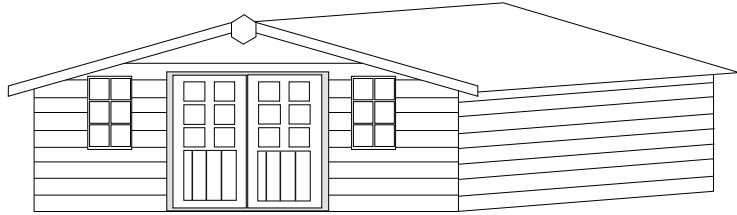
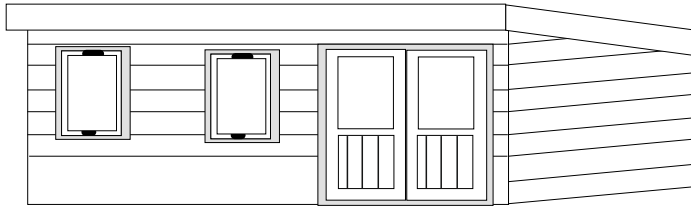


GARDEN OFFICES



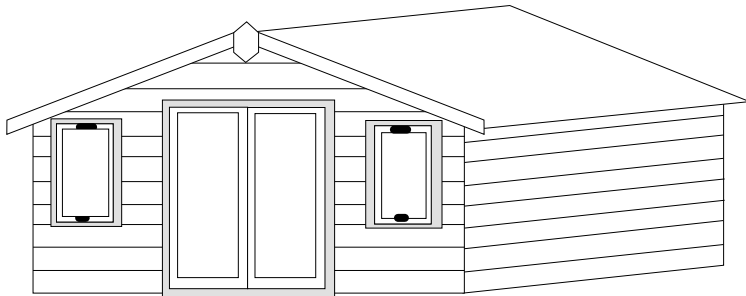
PREMIER

FRAME SIZE 70mm X 35mm
CLADDING SIZE shiplap finished @ 15mm thick
STANDARD TIMBER
SUMMER HOUSE DOORS & WINDOWS



ROBUST

FRAME SIZE 70mm X 35mm
CLADDING SIZE shiplap finished @ 20mm thick
HEAVY DUTY TIMBER
SUMMER HOUSE DOORS & WINDOWS



ROBUST DELUXE

FRAME SIZE 70mm X 35mm
CLADDING SIZE shiplap finished @ 20mm thick
UPVC DOORS & WINDOWS

LOWEST EVE 1.9M
HIGHEST EVE 2.3M

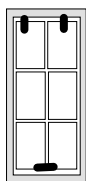
ALL MODELS

INSULATION = ECOTHERM 50MM
LINNING = 12MM TVG TIMBER

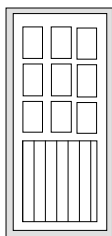
All external cladding is now attached using stainless steel nails

SIZE	PREMIER base coat treatment only	ROBUST base coat treatment only	ROBUST DELUXE base coat treated only	TOP COAT	bearers + set out	bASE WORK
2.4X2.4m (8X8)	£4092	£5059	£6813	+£245	+£80	+£537
3X2.4m (10X8)	£4708	£5698	£7448	+£280	+£80	+£550
3.6X2.4m (12X8)	£5392	£6404	£8149	+£310	+£110	+£654
3X3m (10X10)	£6236	£7259	£8996	+£385	+£200	+£730
3.6X3m (12X10)	£7020	£8065	£9798	+£420	+£220	+£746
3.6X3.6m (12X12)	£7844	£8923	£10,643	+£480	+£240	+£1012
6X3.6m (20X12)	£10,527	£12,072	£13,775	+£630	+£340	+£1556

SUMMER HOUSE
TIMBER WINDOWS

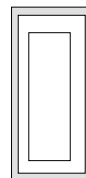


+£110

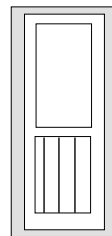


+£290

ROBUST
HEAVY DUTY
TIMBER WINDOWS
SAFETY GLASS

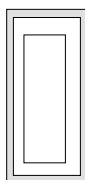


+£220

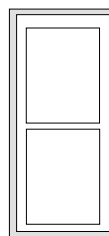


+£470

UPVC DOUBLE GLAZED
TIMBER WINDOWS



+£250



+£570

STIX & STONES

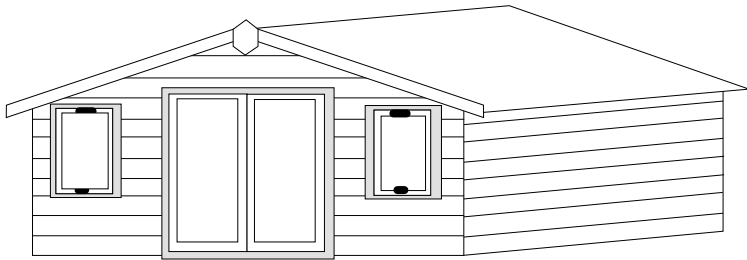
SPECIALIZING IN BESPOKE GARDEN BUILDINGS

GARDEN OFFICES

STIX & STONES
MAIN ROAD
ALRESFORD
COLCHESTER
ESSEX CO7 8DD

EMAIL: info@stixandstones.co.uk
WEBSITE: stixandstones.co.uk

2025
ISSUE No 1



ROBUST DELUXE

ALL PRICES INCLUSIVE OF V.A.T.

TEL: 01206 826835

TUE - FRI 8.30am-4.00pm

SAT-8.30am-12.00 NOON

Closed on Mondays

Thursdays & Fridays

we may be out on site erecting buildings